

# Designer Warmth

Section	Page No.
<b>Towel Rails</b>	
Heated Towel Rail Buying Guide	356
<b>new</b> 25mm Towel Rails – Metallic Finishes	358
25mm Towel Rails – Colour Finishes	360
25mm Towel Rails – Straight	362
25mm Towel Rails – Horizontal	363
25mm Towel Rails – Sealed Electric	363
<b>new</b> Coloured Valves + Elements	364

Designer Towel Rails	
<b>Contemporary Towel Rails</b>	
<b>new</b> Azerley	366
<b>new</b> Broxa	367
Kiso	368
Luna	369
Brierley	370
Voil	370
Muse	371
Shauna	372
Crambeck	373
Ecstasy	374
Nuance	375
Paros	376
<b>new</b> Kinsley	376
<b>Traditional Towel Rails</b>	
Hemsworth	377

Designer Radiators	
<b>new</b> Nostell	378
<b>new</b> Lissett	380
Ovate	382
Adore	383
Medley	384
Symphony	385
Alumina	386
Espada Aluminium	388
Espada	390

Valves	
Valves	392

## What's new and trending this season...



# Designer Warmth Range Selector

Designer Warmth		Heat Source			Finish				Material			Hanging			
Towel Rails	Page No.	Heating	Dual Fuel	Electric	Chrome	Polished Stainless Steel	Black	White	Anthracite	Metallic /Colour Finish	Stainless Steel	Mild Steel	Aluminium	Vertical	Horizontal
<b>new</b> 25mm – Metallic Finishes	358	●	●	●						●		●		●	
25mm – Colour Finishes	360	●	●	●						●		●		●	
25mm – Straight	362	●	●	●	●			●				●		●	
25mm – Horizontal	363	●	●	●	●							●			●
25mm – Sealed Electric	363	●	●	●	●							●		●	

Designer Towel Rails		Heat Source			Finish				Material			Hanging			
Towel Rails	Page No.	Heating	Dual Fuel	Electric	Chrome	Polished Stainless Steel	Black	White	Anthracite	Metallic /Colour Finish	Stainless Steel	Mild Steel	Aluminium	Vertical	Horizontal
<b>new</b> Azerley	366	●	●	●			●		●			●		●	
<b>new</b> Broxa	367	●	●	●						●		●		●	
Kiso	368	●	●	●		●					●			●	●
Luna	369	●	●	●				●	●				●	●	
Brierley	370	●	●	●	●							●		●	
Voil	370	●	●	●					●			●		●	
Muse	371	●	●	●	●			●				●		●	
Shauna	372	●	●	●			●	●				●		●	
Crambeck	373	●	●	●	●			●				●		●	
Ecstasy	374	●	●	●	●			●				●		●	
Nuance	375	●	●	●	●			●				●		●	
Paros	376	●	●	●	●							●		●	
<b>new</b> Kinsley	376	●	●	●	●			●				●		●	
Hemsworth	377	●	●	●	●			●				●		●	

Designer Radiators		Heat Source			Finish				Material			Hanging			
Radiators	Page No.	Heating	Dual Fuel	Electric	Chrome	Polished Stainless Steel	Black	White	Anthracite	Metallic /Colour Finish	Stainless Steel	Mild Steel	Aluminium	Vertical	Horizontal
<b>new</b> Nostell	378	●					●	●	●				●	●	●
<b>new</b> Lissett	380	●					●	●	●				●	●	●
Ovate	382	●						●	●			●		●	
Adore	383	●						●				●		●	●
Medley	384	●						●	●			●		●	●
Symphony	385	●			●		●	●				●		●	
Alumina	386	●						●	●				●	●	●
Espada Aluminium	388	●						●	●				●	●	●
Espada	390	●						●	●			●		●	●

## Designer Warmth Features

There are many features in our designer warmth range. Use the icons to help choose the right option for you.



**Guarantees**  
Our selection of Towel Rails and Radiators have either a 30, 15 or 10 year guarantee.



**Build Material**  
Towel Rails and Radiators are made from either Aluminium, Mild Steel or Stainless Steel.



**Heating**  
For connection to central heating systems.



**Electric**  
Electric only system supply.

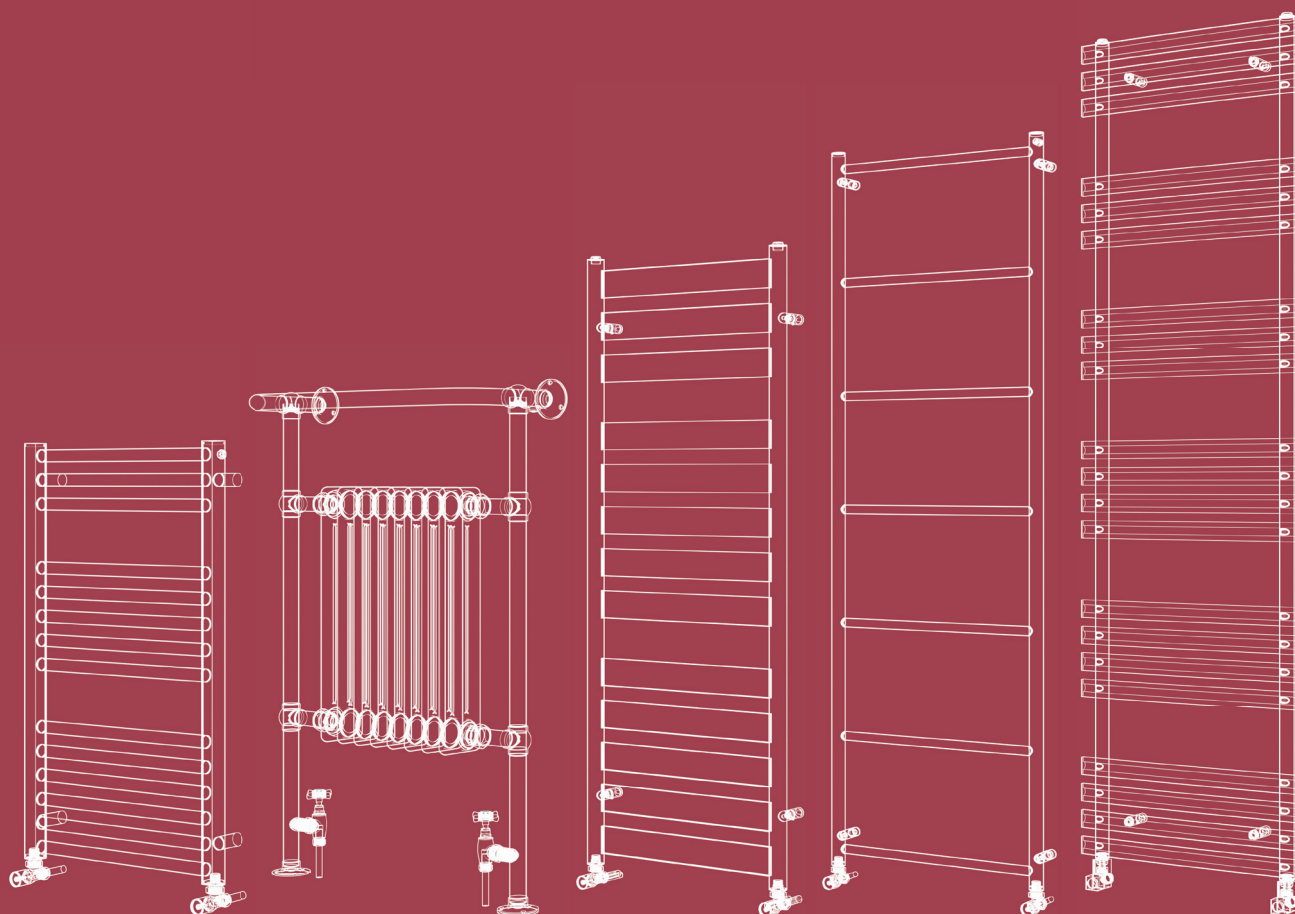


**Dual Fuel**  
Capable of running from either central heating or electric system.

## Heated Towel Rail Buying Guide.

All you need to know about buying the right heated towel rail for your bathroom, cloakroom or en-suite space.

When choosing your heated towel rail, there are a number of factors to consider. To help you make an informed decision, follow our step-by-step guide opposite.



# Heated Towel Rail Buying Guide



## Step 1 Heating Source\*

Your first step is to decide if you are going to connect your towel rail to your central heating system, existing mains electric or run off both as a dual fuel option.



## Step 2 Location

Consider your room size – is it for a family bathroom, downstairs cloakroom or smaller en-suite? Location will determine the size and heat output of the towel rail required.



## Step 3 Heat Output

BTU (British Thermal Unit) output is one of the biggest considerations when deciding your towel rail. The higher the BTU, the higher the heat output will be. Bigger bathrooms need higher BTU rated rails, smaller en-suites lower.



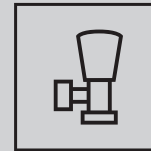
## Step 4 Choose a Style

There are many styles of heated towel rails. Select a Contemporary, Traditional or Ladder style to suit your new bathroom or complement your existing space. Choose from floor standing or wall mounted options; where floor space is at a premium.



## Step 5 Choose a Finish

Select from a wide variety of colours and finishes. Chrome is a very traditional finish but consider new metallic finishes in Brushed Brass, Gunmetal or colour options in Anthracite, Steel Blue or White Sparkle to name a few. The choice is yours!



## Step 6 Choose Accessories

Your final step is to choose a complimentary valve or heating element accessory.

**So now you know how. Browse through the pages ahead and choose the right option for you.**



## Step 7 How to Order

**All towel rail options are for Hot Water Heating systems only.**

If you wish to order a Sealed Electric option please add the supplement code **PHG-EO-SUPP**.

If you wish to order a Dual Fuel option please add the supplement code **PHG-HE-SUPP**.

**PHG080-50ZAT**

Product Code – Heating

**PHG-HE-SUPP**

Supplement Code – Dual Fuel

**PHG-EO-SUPP**

Supplement Code – Sealed Electric

\*Whatever option you choose, you must use a qualified professional to install it for you.

Guarantees

15 Years on Towel Rails

# 25mm Towel Rails

25mm Straight Towel Rail – Metallic Finishes



Heating option supplement applies across all 25mm Straight Towel Rails

PHG-HE-SUPP	Dual fuel add on cost	£91.00
PHG-EO-SUPP	Sealed Electric add on cost	£243.00

# 25mm Towel Rails

## Select Your Towel Rail Size + Metallic Finish

### Choose from three towel rail sizes in four metallic finish options.

Material – Mild Steel

All heat outputs are shown at 50°C ΔT in compliance with BSEN442

Rear air vent

Contemporary metallic finishes in our popular 25mm horizontal tube multirail.

Prices shown are for central heating models



### 800 x 500mm Straight Towel Rail

	Finish	Height	Width	Depth	Watts	Btu/hr	
PHG080-50BRRS	Brushed Brass	800	500	93	275	938	£237.00
PHG080-50GM	Gunmetal	800	500	93	275	938	£237.00
PHG080-50BN	Satin Brushed Nickel	800	500	93	275	938	£237.00
<b>new</b> PHG080-50BBZ	Brushed Bronze	800	500	93	275	938	£237.00

### 1200 x 500mm Straight Towel Rail

	Finish	Height	Width	Depth	Watts	Btu/hr	
PHG120-50BRRS	Brushed Brass	1200	500	93	428	1460	£342.00
PHG120-50GM	Gunmetal	1200	500	93	428	1460	£342.00
PHG120-50BN	Satin Brushed Nickel	1200	500	93	428	1460	£342.00
<b>new</b> PHG120-50BBZ	Brushed Bronze	1200	500	93	428	1460	£342.00

### 1800 x 500mm Straight Towel Rail

	Finish	Height	Width	Depth	Watts	Btu/hr	
PHG180-50BRRS	Brushed Brass	1800	500	93	638	2177	£501.00
PHG180-50GM	Gunmetal	1800	500	93	638	2177	£501.00
PHG180-50BN	Satin Brushed Nickel	1800	500	93	638	2177	£501.00
<b>new</b> PHG180-50BBZ	Brushed Bronze	1800	500	93	638	2177	£501.00



- Brushed Brass  
 A PHG080-50BRRS  
 B PHG120-50BRRS  
 C PHG180-50BRRS

- Gunmetal  
 D PHG080-50GM  
 E PHG120-50GM  
 F PHG180-50GM

- Satin Brushed Nickel  
 G PHG080-50BN  
 H PHG120-50BN  
 I PHG180-50BN

- Brushed Bronze  
 J PHG080-50BBZ  
 K PHG120-50BBZ  
 L PHG180-50BBZ

## Select Your Valve Type + Coordinating Metallic Finish



Brushed Brass  
Straight Valve  
INCNT003ST-ZBBS

Gunmetal  
Straight Valve  
INCNT003ST-ZGM

Satin Brushed Nickel  
Straight Valve  
INCNT003ST-ZBN

Gunmetal  
Angled Valve  
INCNT003AP-ZGM

Brushed Bronze  
Angled Valve  
INCNT003AP-BBZ

Brushed Brass  
Corner Valve  
INCNT023-BBS

Brushed Bronze  
Corner Valve  
INCNT023-BBZ

Metallic Straight Valves (1/2" x 15mm)		
<b>new</b> INCNT003ST-ZBBS	Brushed Brass	£48.00
<b>new</b> INCNT003ST-ZGM	Gunmetal	£48.00
<b>new</b> INCNT003ST-ZBN	Satin Brushed Nickel	£48.00
<b>new</b> INCNT003ST-BBZ	Brushed Bronze	£48.00

Metallic Angled Valves (1/2" x 15mm)		
<b>new</b> INCNT003AP-ZBBS	Brushed Brass	£48.00
<b>new</b> INCNT003AP-ZGM	Gunmetal	£48.00
<b>new</b> INCNT003AP-ZBN	Satin Brushed Nickel	£48.00
<b>new</b> INCNT003AP-BBZ	Brushed Bronze	£48.00

Metallic Corner Valves (1/2" x 15mm)		
<b>new</b> INCNT023-BBS	Brushed Brass	£58.00
<b>new</b> INCNT023-GM	Gunmetal	£58.00
<b>new</b> INCNT023-BN	Satin Brushed Nickel	£58.00
<b>new</b> INCNT023-BBZ	Brushed Bronze	£58.00

# 25mm Towel Rails

Please see page 364 for our range of coloured valves

Guarantees

**15** Years on Towel Rails

## 25mm Straight Towel Rail – Colour Finishes



Heating option supplement applies across all 25mm Straight Towel Rails

PHG-HE-SUPP	Dual fuel add on cost	£91.00
PHG-EO-SUPP	Sealed Electric add on cost	£243.00

# 25mm Towel Rails

## Select Your Towel Rail Size + Colour Finish

Choose from seven towel rail sizes in seven colour finish options.

Material – Mild Steel

All heat outputs are shown at 50°C ΔT in compliance with BSEN442

Rear air vent

Contemporary painted finishes in our popular 25mm horizontal tube multirail.

Prices shown are for central heating models



800 x 500mm Straight Towel Rail							
	Finish	Height	Width	Depth	Watts Btu/hr		
PHG080-50ZAT	Anthracite	800	505	74-84	420	1433	£162.00
PHG080-50ZCA	Cappuccino	800	505	74-84	420	1433	£162.00
PHG080-50ZGS	Grey Sparkle	800	505	74-84	420	1433	£162.00
PHG080-50ZMB	Matt Black	800	505	74-84	420	1433	£162.00
PHG080-50ZMGN	Moss Green	800	505	74-84	420	1433	£162.00
PHG080-50ZSBLU	Steel Blue	800	505	74-84	420	1433	£162.00
PHG080-50ZWS	White Sparkle	800	505	74-84	420	1433	£162.00

1200 x 600mm Straight Towel Rail							
	Finish	Height	Width	Depth	Watts Btu/hr		
PHG120-60ZAT	Anthracite	1200	605	74-84	783	2672	£223.00
PHG120-60ZCA	Cappuccino	1200	605	74-84	783	2672	£223.00
PHG120-60ZGS	Grey Sparkle	1200	605	74-84	783	2672	£223.00
PHG120-60ZMB	Matt Black	1200	605	74-84	783	2672	£223.00
PHG120-60ZMGN	Moss Green	1200	605	74-84	783	2672	£223.00
PHG120-60ZSBLU	Steel Blue	1200	605	74-84	783	2672	£223.00
PHG120-60ZWS	White Sparkle	1200	605	74-84	783	2672	£223.00

1200 x 300mm Straight Towel Rail							
	Finish	Height	Width	Depth	Watts Btu/hr		
PHG120-30ZAT	Anthracite	1200	305	74-84	424	1447	£178.00
PHG120-30ZCA	Cappuccino	1200	305	74-84	424	1447	£178.00
PHG120-30ZGS	Grey Sparkle	1200	305	74-84	424	1447	£178.00
PHG120-30ZMB	Matt Black	1200	305	74-84	424	1447	£178.00
PHG120-30ZMGN	Moss Green	1200	305	74-84	424	1447	£178.00
PHG120-30ZSBLU	Steel Blue	1200	305	74-84	424	1447	£178.00
PHG120-30ZWS	White Sparkle	1200	305	74-84	424	1447	£178.00

1500 x 500mm Straight Towel Rail							
	Finish	Height	Width	Depth	Watts Btu/hr		
PHG150-50ZAT	Anthracite	1500	505	74-84	820	2798	£234.00
PHG150-50ZCA	Cappuccino	1500	505	74-84	820	2798	£234.00
PHG150-50ZGS	Grey Sparkle	1500	505	74-84	820	2798	£234.00
PHG150-50ZMB	Matt Black	1500	505	74-84	820	2798	£234.00
PHG150-50ZMGN	Moss Green	1500	505	74-84	820	2798	£234.00
PHG150-50ZSBLU	Steel Blue	1500	505	74-84	820	2798	£234.00
PHG150-50ZWS	White Sparkle	1500	505	74-84	820	2798	£234.00

1200 x 500mm Straight Towel Rail							
	Finish	Height	Width	Depth	Watts Btu/hr		
PHG120-50ZAT	Anthracite	1200	505	74-84	663	2262	£206.00
PHG120-50ZCA	Cappuccino	1200	505	74-84	663	2262	£206.00
PHG120-50ZGS	Grey Sparkle	1200	505	74-84	663	2262	£206.00
PHG120-50ZMB	Matt Black	1200	505	74-84	663	2262	£206.00
PHG120-50ZMGN	Moss Green	1200	505	74-84	663	2262	£206.00
PHG120-50ZSBLU	Steel Blue	1200	505	74-84	663	2262	£206.00
PHG120-50ZWS	White Sparkle	1200	505	74-84	663	2262	£206.00

1800 x 500mm Straight Towel Rail							
	Finish	Height	Width	Depth	Watts Btu/hr		
PHG180-50ZAT	Anthracite	1800	505	74-84	969	3306	£281.00
PHG180-50ZCA	Cappuccino	1800	505	74-84	969	3306	£281.00
PHG180-50ZGS	Grey Sparkle	1800	505	74-84	969	3306	£281.00
PHG180-50ZMB	Matt Black	1800	505	74-84	969	3306	£281.00
PHG180-50ZMGN	Moss Green	1800	505	74-84	969	3306	£281.00
PHG180-50ZSBLU	Steel Blue	1800	505	74-84	969	3306	£281.00
PHG180-50ZWS	White Sparkle	1800	505	74-84	969	3306	£281.00

## Select Your Valve Type + Coordinating Colour Finish



Straight Valves (½" x 15mm)		
INCNT003ST-ZAT	Anthracite	£48.00
INCNT003ST-ZCA	Cappuccino	£48.00
INCNT003ST-ZGS	Grey Sparkle	£48.00
INCNT003ST-ZMB	Matt Black	£48.00
INCNT003ST-ZMGN	Moss Green	£48.00
INCNT003ST-ZSBLU	Steel Blue	£48.00
INCNT003ST-ZWS	White Sparkle	£48.00

Angled Valves (½" x 15mm)		
INCNT003AP-ZAT	Anthracite	£48.00
INCNT003AP-ZCA	Cappuccino	£48.00
INCNT003AP-ZGS	Grey Sparkle	£48.00
INCNT003AP-ZMB	Matt Black	£48.00
INCNT003AP-ZMGN	Moss Green	£48.00
INCNT003AP-ZSBLU	Steel Blue	£48.00
INCNT003AP-ZWS	White Sparkle	£48.00

Corner Valves (½" x 15mm)		
<b>NEW</b> INCNT023-AT	Anthracite	£49.00
<b>NEW</b> INCNT023-CA	Cappuccino	£49.00
<b>NEW</b> INCNT023-GS	Grey Sparkle	£49.00
<b>NEW</b> INCNT023-MB	Matt Black	£49.00
<b>NEW</b> INCNT023-MGN	Moss Green	£49.00
<b>NEW</b> INCNT023-SBLU	Steel Blue	£49.00
<b>NEW</b> INCNT023-WS	White Sparkle	£49.00



# 25mm Towel Rails

Guarantees

**15** Years  
on Towel Rails

Please see pages 392-393 for our range of valves

## Straight Towel Rails



Chrome



White

### 25mm Straight Towel Rails

Material – Mild Steel

All heat outputs are shown at 50°C ΔT in compliance with BSEN442

Rear air vent

**MS** **H** **DF** **E**

#### Chrome Finish

	Height	Width	Depth	Watts	Btu/hr	Electric Element	
PHG080-30CP	800	305	80-100	177	604	100	£135.00
PHG080-40CP	800	405	80-100	226	771	125	£162.00
PHG080-50CP	800	505	80-100	275	938	150	£170.00
PHG080-60CP	800	605	80-100	324	1105	200	£192.00
PHG100-50CP	1000	505	80-100	351	1198	200	£222.00
PHG100-60CP	1000	605	80-100	414	1413	200	£244.00
PHG120-30CP	1200	305	80-100	273	931	200	£192.00
PHG120-40CP	1200	405	80-100	350	1194	200	£228.00
PHG120-50CP	1200	505	80-100	428	1460	300	£225.00
PHG120-60CP	1200	605	80-100	505	1723	400	£246.00
PHG150-50CP	1500	505	80-100	534	1822	300	£297.00
PHG150-60CP	1500	605	80-100	631	2153	400	£334.00
PHG180-40CP	1800	405	80-100	521	1778	400	£302.00
PHG180-50CP	1800	505	80-100	638	2177	600	£346.00
PHG180-60CP	1800	605	80-100	754	2573	600	£389.00

#### White Finish

	Height	Width	Depth	Watts	Btu/hr	Electric Element	
PHG080-30WH	800	305	80-100	271	925	100	£94.00
PHG080-40WH	800	405	80-100	346	1181	125	£104.00
PHG080-50WH	800	505	80-100	420	1433	150	£115.00
PHG080-60WH	800	605	80-100	495	1689	200	£129.00
PHG100-50WH	1000	505	80-100	446	1522	200	£150.00
PHG100-60WH	1000	605	80-100	510	1740	200	£164.00
PHG120-30WH	1200	305	80-100	424	1447	200	£132.00
PHG120-40WH	1200	405	80-100	543	1853	200	£138.00
PHG120-50WH	1200	505	80-100	663	2262	300	£154.00
PHG120-60WH	1200	605	80-100	783	2672	400	£170.00
PHG150-50WH	1500	505	80-100	820	2798	300	£171.00
PHG150-60WH	1500	605	80-100	969	3306	400	£187.00
PHG180-40WH	1800	405	80-100	793	2706	400	£204.00
PHG180-50WH	1800	505	80-100	969	3306	600	£218.00
PHG180-60WH	1800	605	80-100	1146	3910	600	£244.00

Heating option supplement applies across all 25mm Straight Towel Rails

PHG-HE-SUPP	Dual fuel add on cost	£91.00
PHG-EO-SUPP	Sealed Electric add on cost	£243.00

# 25mm Towel Rails

## Horizontal Straight Towel Rails



Chrome

### 25mm Horizontal Straight Towel Rails

Material – Mild Steel

All heat outputs are shown at 50°C ΔT in compliance with BSEN442  
Rear air vent

**MS** **H** **DF** **E**

## Straight Towel Rails (Sealed Electric)



Chrome

### 25mm Straight Towel Rails (Sealed Electric)

Material – Mild Steel

2 year guarantee on the element

**MS** **E**

#### Chrome Finish

	Height	Width	Depth	Bars	Pipe Centres	Watts	Btu/hr	
PHG-H04010CP	400	1000	93-113	3-4	955	200	682	£183.00
PHG-H05010CP	500	1000	93-113	3-6	955	256	873	£210.00
PHG-H06010CP	600	1000	93-113	3-3-4	955	288	983	£228.00

#### Chrome Finish

	Height	Width	Depth	Bars	Electric Element	
PHG080-50CP-E	800	505	93-113	3-5-6	150	£306.00
PHG080-60CP-E	800	605	93-113	3-5-6	200	£331.00
PHG120-50CP-E	1200	505	93-113	4-5-13	300	£398.00
PHG120-60CP-E	1200	605	93-113	4-5-13	400	£428.00

# Coloured Valves + Elements

Guarantees

**2** Years on Coloured Valves + Elements

## Coloured Valves



Brushed Brass  
INCNT003ST-ZBBS

### Straight Valves (1/2" x 15mm)

<b>new</b> INCNT003ST-ZBBS	Brushed Brass	£48.00
<b>new</b> INCNT003ST-ZGM	Gunmetal	£48.00
<b>new</b> INCNT003ST-ZBN	Satin Brushed Nickel	£48.00
<b>new</b> INCNT003ST-BBZ	Brushed Bronze	£48.00



Gunmetal INCNT003ST-ZGM    Satin Brushed Nickel INCNT003ST-ZBN    Brushed Bronze INCNT003ST-BBZ    Moss Green INCNT003ST-ZMGN    Steel Blue INCNT003ST-ZSBLU



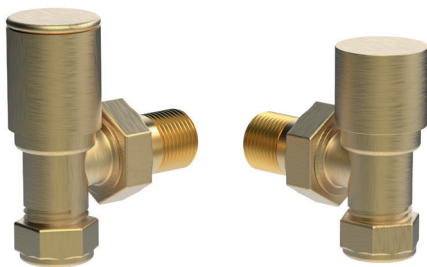
Anthracite INCNT003ST-ZAT    White Sparkle INCNT003ST-ZWS    Grey Sparkle INCNT003ST-ZGS    Matt Black INCNT003ST-ZMB    Cappuccino INCNT003ST-ZCA    Gloss White INCNT003ST-GW

### Straight Valves (1/2" x 15mm)

<b>new</b> INCNT003ST-ZMGN	Moss Green	£48.00
<b>new</b> INCNT003ST-ZSBLU	Steel Blue	£48.00
<b>new</b> INCNT003ST-ZAT	Anthracite	£48.00
<b>new</b> INCNT003ST-ZWS	White Sparkle	£48.00

### Straight Valves (1/2" x 15mm)

<b>new</b> INCNT003ST-ZGS	Grey Sparkle	£48.00
<b>new</b> INCNT003ST-ZMB	Matt Black	£48.00
<b>new</b> INCNT003ST-ZCA	Cappuccino	£48.00
<b>new</b> INCNT003ST-GW	Gloss White	£48.00



Brushed Brass  
INCNT003AP-ZBBS

### Angled Valves (1/2" x 15mm)

<b>new</b> INCNT003AP-ZBBS	Brushed Brass	£48.00
<b>new</b> INCNT003AP-ZGM	Gunmetal	£48.00
<b>new</b> INCNT003AP-ZBN	Satin Brushed Nickel	£48.00
<b>new</b> INCNT003AP-BBZ	Brushed Bronze	£48.00



Gunmetal INCNT003AP-ZGM    Satin Brushed Nickel INCNT003AP-ZBN    Brushed Bronze INCNT003AP-BBZ    Moss Green INCNT003AP-ZMGN    Steel Blue INCNT003AP-ZSBLU



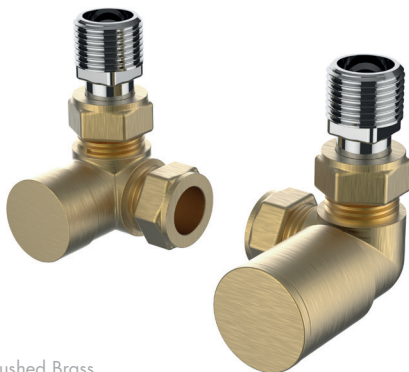
Anthracite INCNT003AP-ZAT    White Sparkle INCNT003AP-ZWS    Grey Sparkle INCNT003AP-ZGS    Matt Black INCNT003AP-ZMB    Cappuccino INCNT003AP-ZCA    Gloss White INCNT003AP-GW

### Angled Valves (1/2" x 15mm)

<b>new</b> INCNT003AP-ZMGN	Moss Green	£48.00
<b>new</b> INCNT003AP-ZSBLU	Steel Blue	£48.00
<b>new</b> INCNT003AP-ZAT	Anthracite	£48.00
<b>new</b> INCNT003AP-ZWS	White Sparkle	£48.00

### Angled Valves (1/2" x 15mm)

<b>new</b> INCNT003AP-ZGS	Grey Sparkle	£48.00
<b>new</b> INCNT003AP-ZMB	Matt Black	£48.00
<b>new</b> INCNT003AP-ZCA	Cappuccino	£48.00
<b>new</b> INCNT003AP-GW	Gloss White	£48.00



Brushed Brass  
INCNT023-BBS

### Corner Valves (1/2" x 15mm)

<b>new</b> INCNT023-BBS	Brushed Brass	£58.00
<b>new</b> INCNT023-GM	Gunmetal	£58.00
<b>new</b> INCNT023-BN	Satin Brushed Nickel	£58.00
<b>new</b> INCNT023-BBZ	Brushed Bronze	£58.00



Gunmetal INCNT023-GM    Brushed Nickel INCNT023-BN    Brushed Bronze INCNT023-BBZ    Moss Green INCNT023-MGN    Steel Blue INCNT023-SBLU



Anthracite INCNT023-AT    White Sparkle INCNT023-WS    Grey Sparkle INCNT023-GS    Matt Black INCNT023-MB    Cappuccino INCNT023-CA

### Corner Valves (1/2" x 15mm)

<b>new</b> INCNT023-MGN	Moss Green	£49.00
<b>new</b> INCNT023-SBLU	Steel Blue	£49.00
<b>new</b> INCNT023-AT	Anthracite	£49.00
<b>new</b> INCNT023-WS	White Sparkle	£49.00

### Corner Valves (1/2" x 15mm)

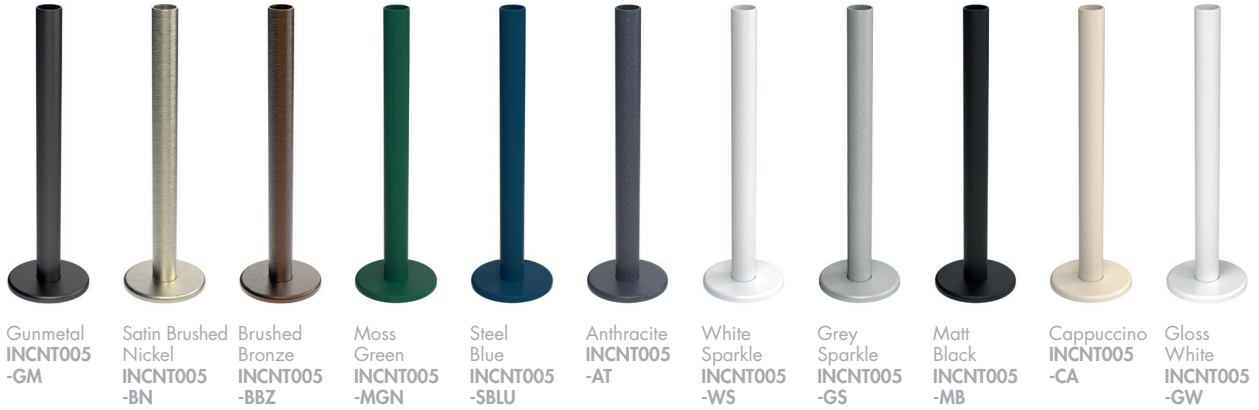
<b>new</b> INCNT023-GS	Grey Sparkle	£49.00
<b>new</b> INCNT023-MB	Matt Black	£49.00
<b>new</b> INCNT023-CA	Cappuccino	£49.00

# Coloured Valves + Elements

## 15mm Pipe Connection Tubes (Pair)



Brushed Brass  
INCNT005-BBS



Gunmetal  
INCNT005  
-GM

Satin Brushed  
Nickel  
INCNT005  
-BN

Brushed  
Bronze  
INCNT005  
-BBZ

Moss  
Green  
INCNT005  
-MGN

Steel  
Blue  
INCNT005  
-SBLU

Anthracite  
INCNT005  
-AT

White  
Sparkle  
INCNT005  
-WS

Grey  
Sparkle  
INCNT005  
-GS

Matt  
Black  
INCNT005  
-MB

Cappuccino  
INCNT005  
-CA

Gloss  
White  
INCNT005  
-GW

<b>INCNT005-BBS</b>	Brushed Brass	£37.00
<b>INCNT005-GM</b>	Gunmetal	£37.00
<b>INCNT005-BN</b>	Satin Brushed Nickel	£37.00
<b>INCNT005-BBZ</b>	Brushed Bronze	£37.00

<b>INCNT005-MGN</b>	Moss Green	£37.00
<b>INCNT005-SBLU</b>	Steel Blue	£37.00
<b>INCNT005-AT</b>	Anthracite	£37.00
<b>INCNT005-WS</b>	White Sparkle	£37.00

<b>INCNT005-GS</b>	Grey Sparkle	£37.00
<b>INCNT005-MB</b>	Matt Black	£37.00
<b>INCNT005-CA</b>	Cappuccino	£37.00
<b>INCNT005-GW</b>	Gloss White	£37.00

## Elements



### Standard Element IP55

A benchmark element to suit each size of product.

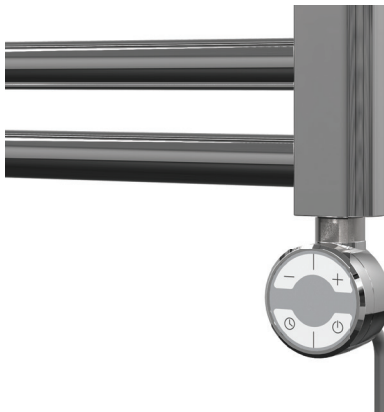
<b>PHG-EOST</b>	Electric Only	£234.00
<b>PHG-DFST</b>	Dual Fuel	£88.00



### 15mm Dual Fuel Corner Radiator Valves (Pair)

Finish – Polished Chrome  
Dimensions – 71.8(h) x 64.3(w) x 68.5/48.3(d) mm

<b>INST-AL049LC</b>	£47.00
---------------------	--------



### Heat Sensor Element IPX5\*

An electronic temperature sensor control.

<b>PHG-EOHS</b>	Electric Only	£390.00
<b>PHG-DFHS</b>	Dual Fuel	£255.00

\*Optional cover shroud available PHG-AC040, ask for details.

### Towel Rail Element including Tee Piece + 1/2" Plug

Suitable for both dual-fuel and electric only  
Maintains liquid temperature between 40-54°C

<b>TRE150</b>	150W	£51.00
<b>TRE250</b>	250W	£53.00
<b>TRE400</b>	400W	£55.00
<b>TRE600</b>	600W	£57.00
<b>TRE800</b>	800W	£66.00



### Remote Controlled Heat Element IPX4 NTC – Negative Temperature Coefficient Technology

Remote controlled programmable element for adjustable temperature control via App or remote control (see below).

<b>SEE005-0300CP</b>	NTC IPX4 300W	£261.00
<b>SEE005-0600CP</b>	NTC IPX4 600W	£265.00

### Remote Control

Remote control for heat element IPX4 NTC.



<b>SEE005-REMOTE</b>	£78.00
----------------------	--------

### 1/2" M + F Dual Fuel Elbow

Finish – Chrome



<b>DFE12</b>	£8.00
--------------	-------

# Azerley

**Guarantees**

**10** Years on Azerley

**15** Years on Broxa

new



Matt Black  
1000 x 500mm  
AZ1000500MB

## Azerley

Finish – Matt Black or Anthracite  
Material – Aluminium

All heat outputs are shown at 50°C ΔT in compliance with BSEN442.

For details on up-grading from standard elements to Thermostatic or Remote Control, please see page 365. Please see pages 392-393 for our range of valves.

**AL H DF E**

**Matt Black Finish**

	Height	Width	Depth	Bars	Pipe Centres	Watts	Btu/hr	
AZ0700500MB	700	500	72-81	3	455	329	1123	£388.00
AZ1000500MB	1000	500	72-81	4	455	446	1522	£486.00
AZ1300500MB	1300	500	72-81	5	455	563	1921	£597.00
AZ1600500MB	1600	500	72-81	6	455	681	2324	£691.00

**Anthracite Finish**

	Height	Width	Depth	Bars	Pipe Centres	Watts	Btu/hr	
AZ0700500AT	700	500	72-81	3	455	329	1123	£393.00
AZ1000500AT	1000	500	72-81	4	455	446	1522	£493.00
AZ1300500AT	1300	500	72-81	5	455	563	1921	£606.00
AZ1600500AT	1600	500	72-81	6	455	681	2324	£702.00



Anthracite  
700 x 500mm  
AZ0700500AT

Anthracite  
1000 x 500mm  
AZ1000500AT

Anthracite  
1300 x 500mm  
AZ1300500AT

Anthracite  
1600 x 500mm  
AZ1600500AT

All dimensions in mm. All measurements are approximate and subject to standard tolerances.

INSTINCT®

Designer Towel Rails

Broxa

Heating option supplement applies across all Designer Towel Rails		
PHG-HE-SUPP	Dual fuel add on cost	£91.00
PHG-EO-SUPP	Sealed Electric add on cost	£243.00



Brushed Brass  
1200 x 500mm  
BR12050BR



new

**Broxa**

Finish – Brushed Brass

Material – Mild Steel

All heat outputs are shown at 50°C ΔT in compliance with BSEN442.

For details on up-grading from standard elements to Thermostatic or Remote Control, please see page 365. Please see pages 392-393 for our range of valves.

**MS** **H** **DF** **E**

	Height	Width	Depth	Bars	Pipe Centres	Watts	Btu/hr	
<b>new</b> BR0850BR	800	500	102	2-3-3	450	-	994	£458.00
BR12050BR	1200	500	102	3-4-5	450	-	1491	£642.00
<b>new</b> BR16050BR	1600	500	102	3-4-4-5	450	-	1987	£825.00



Brushed Brass  
800 x 500mm  
BR0850BR

Brushed Brass  
1200 x 500mm  
BR12050BR

Brushed Brass  
1600 x 500mm  
BR16050BR

# Kiso

**Guarantees**

**30** Years on Kiso    **10** Years on Luna



Polished Stainless Steel  
1200 x 500mm  
KI-S1250S



Polished Stainless Steel  
600 x 1000mm  
TO0601000PS

**Kiso**

Finish – Polished Stainless Steel Material – Stainless Steel  
All heat outputs are shown at 50°C ΔT in compliance with BSEN442.  
Watts and Btu's apply to Heating and Dual Fuel only.  
For details on up-grading from standard elements to Thermostatic or Remote Control, please see page 365. Please see pages 392-393 for our range of valves.

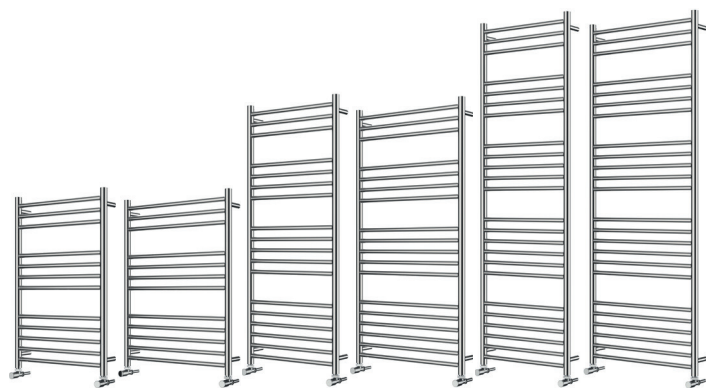
STAINLESS STEEL    **H**    **DF**    **E**

**Straight**

	Height	Width	Depth	Bars	Pipe Centres	Watts	Btu/hr	
KI-S0850S	800	500	100	3-4-5	468	243	829	£549.00
KI-S0860S	800	600	100	3-4-5	568	269	918	£628.00
KI-S1250S	1200	500	100	3-4-5-6	468	348	1187	£741.00
KI-S1260S	1200	600	100	3-4-5-6	568	402	1372	£868.00
KI-S1650S	1600	500	100	3-4-5-6-6	468	464	1583	£1064.00
KI-S1660S	1600	600	100	3-4-5-6-6	568	536	1829	£1123.00

**Horizontal**

	Height	Width	Depth	Bars	Pipe Centres	Watts	Btu/hr	
TO0600750PS	600	750	100	4-5	718	419	1430	£550.00
TO0601000PS	600	1000	100	4-5	968	517	1764	£635.00
TO0800750PS	800	750	100	3-4-5	718	529	1805	£669.00
TO0801000PS	800	1000	100	3-4-5	968	682	2327	£731.00



800 x 500mm KI-S0850S    800 x 600mm KI-S0860S    1200 x 500mm KI-S1250S    1200 x 600mm KI-S1260S    1600 x 500mm KI-S1650S    1600 x 600mm KI-S1660S



600 x 750mm TO0600750PS    600 x 1000mm TO0601000PS    800 x 750mm TO0800750PS    800 x 1000mm TO0801000PS

All dimensions in mm. All measurements are approximate and subject to standard tolerances.

# Luna

**Heating option supplement applies across all Designer Towel Rails**

<b>PHG-HE-SUPP</b>	Dual fuel add on cost	£91.00
<b>PHG-EO-SUPP</b>	Sealed Electric add on cost	£243.00



Anthracite  
1200 x 500mm  
LUN12050AT



White  
1200 x 500mm  
LUN12050WH

## Luna

Finish – White or Anthracite

Material – Aluminium

All heat outputs are shown at 50°C ΔT in compliance with BSEN442.

Watts and Btu's apply to Heating and Dual Fuel only. Watts 600 on Electric only model.

For details on up-grading from standard elements to Thermostatic or Remote Control, please see pages 365. Please see pages 392-393 for our range of valves.

**AL** **H** **DF** **E**

**Anthracite Finish**

	Height	Width	Depth	Bars	Pipe Centres	Watts	Btu/hr	
<b>LUN12050AT</b>	1200	500	100	3-3-4	470	778	2655	£505.00
<b>LUN16050AT</b>	1600	500	100	3-3-3-4	470	1043	3560	£593.00

**White Finish**

	Height	Width	Depth	Bars	Pipe Centres	Watts	Btu/hr	
<b>LUN12050WH</b>	1200	500	100	3-3-4	470	778	2655	£490.00
<b>LUN16050WH</b>	1600	500	100	3-3-3-4	470	1043	3560	£578.00



Anthracite  
1200 x 500mm  
LUN12050AT

Anthracite  
1600 x 500mm  
LUN16050AT

White  
1200 x 500mm  
LUN12050WH

White  
1600 x 500mm  
LUN16050WH



# Brierley / Voil

**Guarantees**

**15** Years  
on Brierley, Voil + Muse



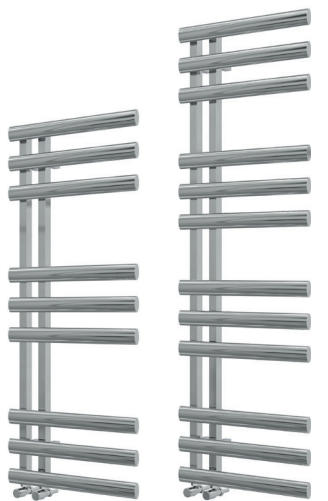
Chrome  
1200 x 500mm  
BRIERL1200500CP

**Brierley**

Finish – Chrome  
Material – Mild Steel  
All heat outputs are shown at 50°C ΔT in compliance with BSEN442.  
For details on up-grading from standard elements to Thermostatic or Remote Control, please see page 365. Please see pages 392-393 for our range of valves.

**MS H DF E**

	Height	Width	Depth	Bars	Pipe Centres	Watts	Btu/hr	
<b>BRIERL1200500CP</b>	1200	500	125-137	3-3-3	80	237	809	£553.00
<b>BRIERL1500500CP</b>	1500	500	125-137	3-3-3-3	80	309	1054	£630.00



Chrome  
1200 x 500mm  
BRIERL1200500CP

Chrome  
1500 x 500mm  
BRIERL1500500CP



Anthracite  
850 x 500mm  
VOIL0850500AT

**Voil**

Finish – Anthracite  
Material – Mild Steel  
All heat outputs are shown at 50°C ΔT in compliance with BSEN442.  
Watts and Btu's apply to Heating and Dual Fuel only.  
For details on up-grading from standard elements to Thermostatic or Remote Control, please see page 365. Please see pages 392-393 for our range of valves.

**MS H DF E**

	Height	Width	Depth	Bars	Pipe Centres	Watts	Btu/hr	
<b>VOIL0850500AT</b>	850	500	125	2-3-3	300	524	1788	£404.00
<b>VOIL1200500AT</b>	1200	500	125	2-3-3-3	300	683	2330	£527.00
<b>VOIL1550500AT</b>	1550	500	125	3-3-4-6	300	966	3296	£694.00



Mat Black  
850 x 500mm  
VOIL0850500AT

Mat Black  
1200 x 500mm  
VOIL1200500AT

Mat Black  
1550 x 500mm  
VOIL1550500AT

All dimensions in mm. All measurements are approximate and subject to standard tolerances.

INSTINCT®

Designer Towel Rails

# Muse

**Heating option supplement applies across all Designer Towel Rails**

<b>PHG-HE-SUPP</b>	Dual fuel add on cost	£91.00
<b>PHG-EO-SUPP</b>	Sealed Electric add on cost	£243.00



## Muse

Finish – Chrome or Matt Black

Material – Mild Steel

All heat outputs are shown at 50°C ΔT in compliance with BSEN442.

For details on up-grading from standard elements to Thermostatic or Remote Control, please see page 365. Please see pages 392-393 for our range of valves.

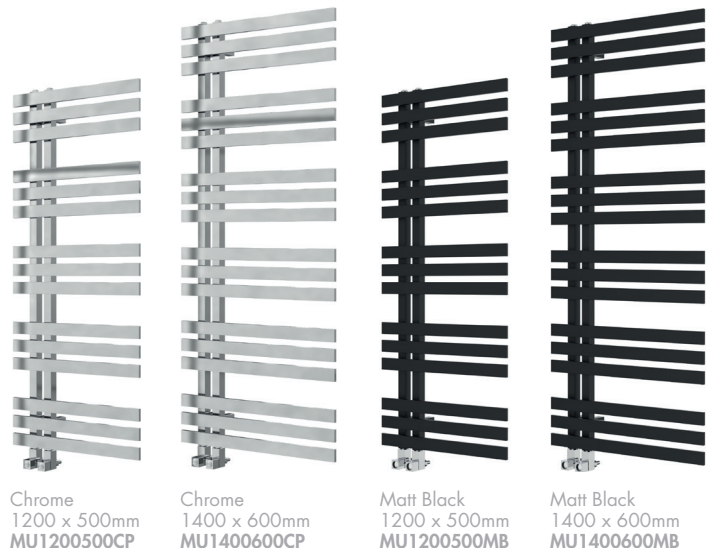
**MS** **H** **DF** **E**

**Chrome Finish**

	Height	Width	Depth	Bars	Pipe Centres	Watts	Btu/hr	£
<b>MU1200500CP</b>	1200	500	118	3-3-3-3-3	60	354	1208	£581.00
<b>MU1400600CP</b>	1400	600	118	3-3-3-3-3-3	60	436	1488	£640.00

**Matt Black Finish**

	Height	Width	Depth	Bars	Pipe Centres	Watts	Btu/hr	£
<b>MU1200500MB</b>	1200	500	118	3-3-3-3-3	60	442	1508	£530.00
<b>MU1400600MB</b>	1400	600	118	3-3-3-3-3-3	60	545	1859	£595.00



# Shauna

Guarantees

**15** Years  
on Shauna + Crambeck



Matt Black  
1500 x 500mm  
SHAUNA1500500MB

## Shauna

Finish – Matt Black or White Sparkle

Material – Mild Steel

All heat outputs are shown at 50°C ΔT in compliance with BSEN442.

For details on up-grading from standard elements to Thermostatic or Remote Control, please see page 365. Please see pages 392-393 for our range of valves.

**MS** **H** **DF** **E**

Matt Black Finish								
	Height	Width	Depth	Bars	Pipe Centres	Watts	Btu/hr	
SHAUNA0800500MB	800	500	105-120	3-7	50	447	1525	£461.00
SHAUNA1200500MB	1200	500	105-120	3-5-7	50	628	2143	£573.00
SHAUNA1500500MB	1500	500	105-120	3-4-5-7	50	770	2627	£651.00

White Sparkle Finish								
	Height	Width	Depth	Bars	Pipe Centres	Watts	Btu/hr	
SHAUNA0800500WS	800	500	105-120	3-7	50	447	1525	£461.00
SHAUNA1200500WS	1200	500	105-120	3-5-7	50	628	2143	£573.00
SHAUNA1500500WS	1500	500	105-120	3-4-5-7	50	770	2627	£651.00



White Sparkle  
800 x 500mm  
SHAUNA0800500WS

White Sparkle  
1200 x 500mm  
SHAUNA1200500WS

White Sparkle  
1500 x 500mm  
SHAUNA1500500WS

All dimensions in mm. All measurements are approximate and subject to standard tolerances.

INSTINCT®

Designer Towel Rails

# Crambeck

**Heating option supplement applies across all Designer Towel Rails**

<b>PHG-HE-SUPP</b>	Dual fuel add on cost	£91.00
<b>PHG-EO-SUPP</b>	Sealed Electric add on cost	£243.00



Chrome  
1800 x 500mm  
CRAMBECK18050CP



Matt Black  
1800 x 500mm  
CRAMBECK18050MB

## Crambeck

Finish – Chrome or Matt Black

Material – Mild Steel

All heat outputs are shown at 50°C ΔT in compliance with BSEN442.

For details on up-grading from standard elements to Thermostatic or Remote Control, please see page 365. Please see pages 392-393 for our range of valves.

**MS** **H** **DF** **E**

**Chrome Finish**

	Height	Width	Depth	Bars	Pipe Centres	Watts	Btu/hr	
<b>CRAMBECK08050CP</b>	828	500	95	3-3-4	430	232	792	£489.00
<b>CRAMBECK12050CP</b>	1200	500	95	3-4-4-4	430	346	1181	£626.00
<b>CRAMBECK18050CP</b>	1800	500	95	3-3-3-4-4-4	430	491	1675	£787.00

**Matt Black Finish**

	Height	Width	Depth	Bars	Pipe Centres	Watts	Btu/hr	
<b>CRAMBECK08050MB</b>	828	500	95	3-3-4	430	290	989	£416.00
<b>CRAMBECK12050MB</b>	1200	500	95	3-4-4-4	430	432	1474	£528.00
<b>CRAMBECK18050MB</b>	1800	500	95	3-3-3-4-4-4	430	614	2095	£666.00



Matt Black  
828 x 500mm  
CRAMBECK08050MB

Matt Black  
1200 x 500mm  
CRAMBECK12050MB

Matt Black  
1800 x 500mm  
CRAMBECK18050MB

# Ecstasy

Guarantees

**15** Years  
on Ecstasy + Nuance

new



Matt Black  
1300 x 500mm  
EC1300500MB

new



Brushed Brass  
1300 x 500mm  
EC1300500BB

## Ecstasy

Finish – Chrome, Matt Black or Brushed Brass  
Material – Mild Steel

All heat outputs are shown at 50°C ΔT in compliance with BSEN442.

Watts and Btu's apply to Heating and Dual Fuel only.

For details on up-grading from standard elements to Thermostatic or Remote Control, please see page 365. Please see pages 392-393 for our range of valves.

**MS H DF E**

### Chrome Finish

	Height	Width	Depth	Bars	Pipe Centres	Watts	Btu/hr	
EC0950C	950	500	82	2-3-4	462	246	839	£322.00
EC1350C	1300	500	82	3-5-5	462	330	1126	£352.00

### Matt Black Finish

	Height	Width	Depth	Bars	Pipe Centres	Watts	Btu/hr	
<b>new</b> EC0950500MB	950	500	82	2-3-4	462	289	986	£306.00
<b>new</b> EC1300500MB	1300	500	82	3-5-5	462	389	1327	£458.00

### Brushed Brass Finish

	Height	Width	Depth	Bars	Pipe Centres	Watts	Btu/hr	
<b>new</b> EC0950500BB	950	500	84	2-3-4	462	299	1021	£500.00
<b>new</b> EC1300500BB	1300	500	84	3-5-5	462	426	1453	£677.00

Chrome  
1300 x 500mm  
EC1350C

Matt Black  
1300 x 500mm  
EC1300500MB

Brushed Brass  
1300 x 500mm  
EC1300500BB



Chrome  
950 x 500mm  
EC0950C

Matt Black  
950 x 500mm  
EC0950500MB

Brushed Brass  
950 x 500mm  
EC0950500BB

All dimensions in mm. All measurements are approximate and subject to standard tolerances.

INSTINCT®

Designer Towel Rails

# Nuance

## Heating option supplement applies across all Designer Towel Rails

PHG-HE-SUPP	Dual fuel add on cost	£91.00
PHG-EO-SUPP	Sealed Electric add on cost	£243.00



## Nuance

Finish – Chrome or Matt Black Material – Mild Steel

All heat outputs are shown at 50°C ΔT in compliance with BSEN442.

Watts and Btu's apply to Heating and Dual Fuel only.

For details on up-grading from standard elements to Thermostatic or Remote Control, please see page 365. Please see pages 392-393 for our range of valves.

**MS** **H** **DF** **E**

### Chrome Finish

	Height	Width	Depth	Bars	Pipe Centres	Watts	Btu/hr	
NU1050C	1000	500	80	12	470	257	877	£335.00
NU1150C	1165	500	80	15	470	314	1071	£379.00
NU1160C	1165	600	80	15	570	365	1245	£420.00
NU1750C	1700	500	80	20	470	434	1481	£494.00

### Matt Black Finish

	Height	Width	Depth	Bars	Pipe Centres	Watts	Btu/hr	
<b>new</b> NU1000500MB	1000	500	80	12	470	409	1396	£310.00
<b>new</b> NU1165500MB	1165	500	80	15	470	420	1433	£342.00
<b>new</b> NU1165600MB	1165	600	80	15	570	437	1491	£374.00
<b>new</b> NU1700500MB	1700	500	80	20	470	501	1709	£403.00



Chrome  
1000 x 500mm  
NU1050C

Chrome  
1165 x 500mm  
NU1150C

Chrome  
1165 x 600mm  
NU1160C

Chrome  
1700 x 500mm  
NU1750C

# Paros / Kinsley

**Guarantees**

**15** Years  
on Paros, Kinsley + Hemsworth



## Paros

Finish – Chrome  
Material – Mild Steel  
All heat outputs are shown at 50°C ΔT in compliance with BSEN442.  
Watts and Btu's apply to Heating and Dual Fuel only.  
For details on up-grading from standard elements to Thermostatic or Remote Control, please see page 365. Please see pages 392-393 for our range of valves.

**MS H DF E**

	Height	Width	Depth	Bars	Watts	Btu/hr	
PA0772500CP	772	500	80-95	3-5-5	290	989	£257.00
PA0772600CP	772	600	80-95	3-5-5	347	1184	£277.00
PA1186500CP	1186	500	80-95	5-5-5-5	465	1587	£365.00
PA1508500CP	1508	500	80-95	5-5-5-5-5	581	1982	£436.00
PA1738500CP	1738	500	80-95	6-6-6-6-6	687	2344	£501.00

## Kinsley

Finish – Chrome and White  
Material – Mild Steel  
All heat outputs are shown at 50°C ΔT in compliance with BSEN442.  
Watts and Btu's apply to Heating and Dual Fuel only.  
For details on up-grading from standard elements to Thermostatic or Remote Control, please see page 365. Please see pages 392-393 for our range of valves.

**MS H DF E**

	Height	Width	Depth	Bars	Watts	Btu/hr	
KIN1200500CP	1200	500	93	3-3-3	834	2846	£905.00
KIN1200600CP	1200	600	93	3-3-3	1033	3525	£983.00
KIN1500500CP	1500	500	93	3-3-3-3	1145	3907	£1057.00
KIN1500600CP	1500	600	93	3-3-3-3	1438	4906	£1140.00



Chrome 772 x 500mm PA0772500CP  
 Chrome 772 x 600mm PA0772600CP  
 Chrome 1186 x 500mm PA1186500CP  
 Chrome 1508 x 500mm PA1508500CP  
 Chrome 1738 x 500mm PA1738500CP



Chrome + White 1200 x 500mm KIN1200500CP  
 Chrome + White 1200 x 600mm KIN1200600CP  
 Chrome + White 1500 x 500mm KIN1500500CP  
 Chrome + White 1500 x 600mm KIN1500600CP

All dimensions in mm. All measurements are approximate and subject to standard tolerances.

INSTINCT®

Designer Towel Rails

**Heating option supplement applies across all Designer Towel Rails**

<b>PHG-HE-SUPP</b>	Dual fuel add on cost	£91.00
<b>PHG-EO-SUPP</b>	Sealed Electric add on cost	£243.00

# Hemsworth



## Hemsworth

Finish – Chrome and White

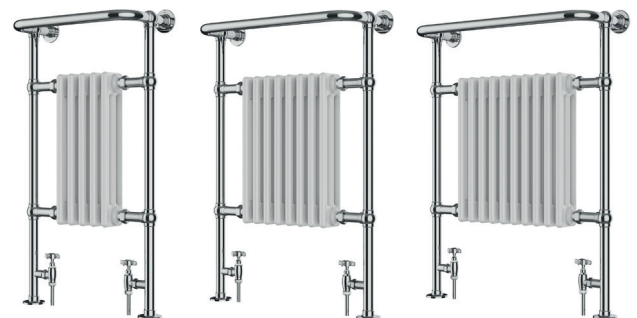
Material – Mild Steel

All heat outputs are shown at 50°C ΔT in compliance with BSEN442.

Please see pages 392-393 for our range of valves.

**MS** **H** **DF** **E**

	Height	Width	Depth	Face to Face Connections	Watts	Btu/hr	
<b>HE9654C</b>	963	538	230	393	392	1338	£691.00
<b>HE9667C</b>	963	673	230	528	554	1890	£823.00
<b>HE9676C</b>	963	763	230	618	653	2228	£943.00
<b>KENSFW150050CP</b>	1500	500	250	355	815	2781	£1025.00



Chrome + White  
963 x 538mm  
HE9654C

Chrome + White  
963 x 673mm  
HE9667C

Chrome + White  
963 x 763mm  
HE9676C



# Nostell

Guarantees

**10** Years on Nostell

Vertical Radiators



Matt Black  
1800 x 400mm  
NOS1800400MB



Matt White  
1800 x 400mm  
NOS1800400MW

**Vertical Panel**

Finish – Anthracite, Matt Black or Matt White  
Material – Aluminium  
All heat outputs are shown at 50°C ΔT in compliance with BSEN442.

**AL** **H**

**Anthracite Finish**

	Height	Width	Depth	End to End Connections	Watts	Btu/hr	
NOS1800280AT	1800	280	118	280	1335	4555	£984.00
NOS1800400AT	1800	400	118	400	1869	6377	£1278.00
NOS1800520AT	1800	520	118	520	2403	8199	£1592.00

**Matt Black Finish**

	Height	Width	Depth	End to End Connections	Watts	Btu/hr	
NOS1800280MB	1800	280	118	280	1335	4555	£952.00
NOS1800400MB	1800	400	118	400	1869	6377	£1256.00
NOS1800520MB	1800	520	118	520	2403	8199	£1564.00



**Matt White Finish**

	Height	Width	Depth	End to End Connections	Watts	Btu/hr	
NOS1800280MW	1800	280	118	280	1355	4555	£928.00
NOS1800400MW	1800	400	118	400	1869	6377	£1223.00
NOS1800520MW	1800	520	118	520	2403	8199	£1522.00

Please see pages 392-393 for our range of valves

Horizontal Radiators



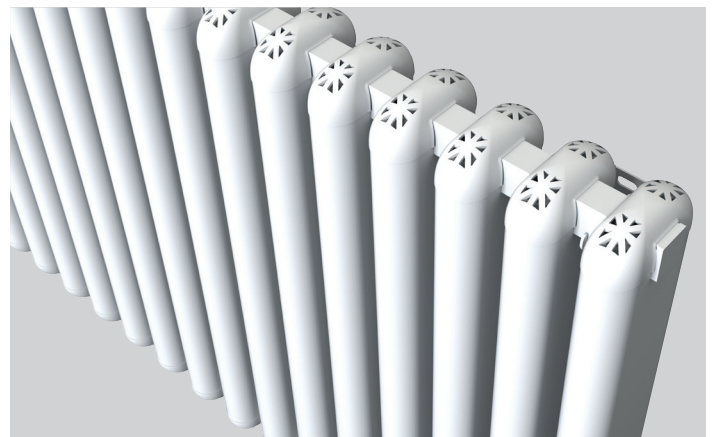
Horizontal Panel

Finish – Anthracite, Matt Black or Matt White  
Material – Aluminium  
All heat outputs are shown at 50°C ΔT in compliance with BSEN442.

AL H

Anthracite Finish							
	Height	Width	Depth	End to End Connections	Watts	Btu/hr	
NOS0600640AT	600	640	118	640	1023	3490	£870.00
NOS0600760AT	600	760	118	760	1209	4125	£1001.00
NOS0600100AT	600	1000	118	1000	1581	5394	£1263.00
NOS0600124AT	600	1240	118	1240	1953	6664	£1534.00
NOS0600136AT	600	1360	118	1360	2139	7298	£1666.00

Matt Black Finish							
	Height	Width	Depth	End to End Connections	Watts	Btu/hr	
NOS0600640MB	600	640	118	640	1023	3490	£856.00
NOS0600760MB	600	760	118	760	1209	4125	£984.00
NOS0600100MB	600	1000	118	1000	1581	5394	£1242.00
NOS0600124MB	600	1240	118	1240	1953	6664	£1507.00
NOS0600136MB	600	1360	118	1360	2139	7298	£1636.00



Matt White Finish							
	Height	Width	Depth	End to End Connections	Watts	Btu/hr	
NOS0600640MW	600	640	118	640	1023	3490	£834.00
NOS0600760MW	600	760	118	760	1209	4125	£959.00
NOS0600100MW	600	1000	118	1000	1581	5394	£1209.00
NOS0600124MW	600	1240	118	1240	1953	6664	£1467.00
NOS0600136MW	600	1360	118	1360	2139	7298	£1591.00

# Lissett

Guarantees

**10** Years  
on Lissett

new



Matt Black  
1800 x 490mm  
LISS1800490MB



Matt White  
1800 x 490mm  
LISS1800490MW

## Vertical Panel

Finish – Anthracite, Matt Black or Matt White Material – Aluminium  
All heat outputs are shown at 50°C ΔT in compliance with BSEN442.

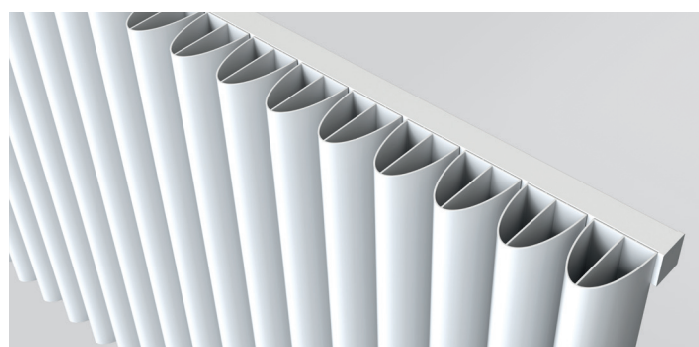
**AL** **H**

### Anthracite Finish

	Height	Width	Depth	End to End Connections	Watts	Btu/hr	
LISS1800380AT	1800	380	108-117	380	1519	5183	£1176.00
LISS1800490AT	1800	490	108-117	490	1953	6664	£1458.00
LISS1800600AT	1800	600	108-117	600	2387	8144	£1739.00

### Matt Black Finish

	Height	Width	Depth	End to End Connections	Watts	Btu/hr	
LISS1800380MB	1800	380	108-117	380	1519	5183	£1155.00
LISS1800490MB	1800	490	108-117	490	1953	6664	£1429.00
LISS1800600MB	1800	600	108-117	600	2387	8144	£1708.00



### Matt White Finish

	Height	Width	Depth	End to End Connections	Watts	Btu/hr	
LISS1800380MW	1800	380	108-117	380	1519	5183	£1125.00
LISS1800490MW	1800	490	108-117	490	1953	6664	£1393.00
LISS1800600MW	1800	600	108-117	600	2387	8144	£1662.00

# Lissett

Please see pages 392-393 for our range of valves



## Horizontal Panel

Finish – Anthracite, Matt Black or Matt White Material – Aluminium  
All heat outputs are shown at 50°C ΔT in compliance with BSEN442.

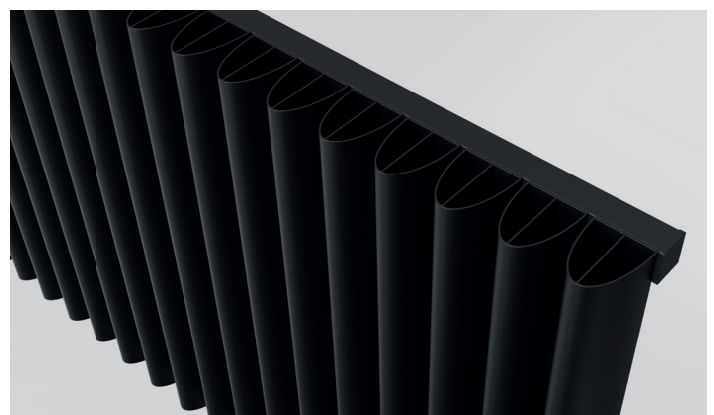
AL H

### Anthracite Finish

	Height	Width	Depth	End to End Connections	Watts	Btu/hr	
LISS0600600AT	575	600	108-117	600	836	2852	£796.00
LISS0600820AT	575	820	108-117	820	1140	3890	£1008.00
LISS0600104AT	575	1040	108-117	1040	1444	4927	£1266.00
LISS0600120AT	575	1205	108-117	1205	1672	5705	£1450.00
LISS0600142AT	575	1425	108-117	1425	1976	6742	£1685.00

### Matt Black Finish

	Height	Width	Depth	End to End Connections	Watts	Btu/hr	
LISS0600600MB	575	600	108-117	600	836	2852	£783.00
LISS0600820MB	575	820	108-117	820	1140	3890	£1013.00
LISS0600104MB	575	1040	108-117	1040	1444	4927	£1244.00
LISS0600120MB	575	1205	108-117	1205	1672	5705	£1425.00
LISS0600142MB	575	1425	108-117	1425	1976	6742	£1655.00



### Matt White Finish

	Height	Width	Depth	End to End Connections	Watts	Btu/hr	
LISS0600600MW	575	600	108-117	600	836	2852	£763.00
LISS0600820MW	575	820	108-117	820	1140	3890	£987.00
LISS0600104MW	575	1040	108-117	1040	1444	4927	£1211.00
LISS0600120MW	575	1205	108-117	1205	1672	5705	£1387.00
LISS0600142MW	575	1425	108-117	1425	1976	6742	£1610.00

# Ovate

**Guarantees**

**15** Years  
on Ovate + Adore



White  
1800 x 352mm  
OV-D180352WH



Anthracite  
1800 x 352mm  
OV-D180352AT

**Ovate Double**

Finish – White or Anthracite

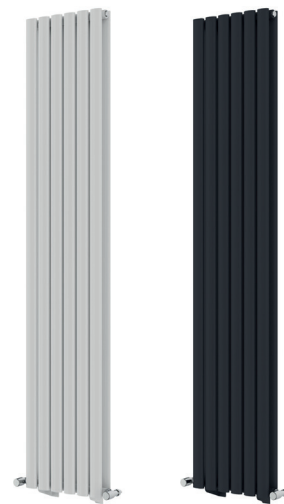
Material – Mild Steel

All heat outputs are shown at 50°C ΔT in compliance with BSEN442.

**MS H**

White Finish						
	Height	Width	Depth	End to End Connections	Watts	Btu/hr
OV-D180352WH	1800	352	105-110	352	1014	3460 £636.00

Anthracite Finish						
	Height	Width	Depth	End to End Connections	Watts	Btu/hr
OV-D180352AT	1800	352	105-110	352	1014	3460 £636.00



White  
1800 x 352mm  
OV-D180352WH

Anthracite  
1800 x 352mm  
OV-D180352AT

Please see pages 392-393 for our range of valves

# Adore



White  
1800 x 284mm  
AD2C-180-06-0284

## Adore

Finish – White Material – Mild Steel

All heat outputs are shown at 50°C ΔT in compliance with BSEN442. For details on up-grading from standard elements to Thermostatic or Remote Control, please see page 365. Please see pages 392-393 for our range of valves.

MS H

### 2 Column Radiators

	Height	Width	Depth	No. of Sections	Watts	Btu/hr	
AD2C-050-22-0988	500	988	68	22	817	2788	£591.00
AD2C-060-10-0460	600	460	68	10	440	1501	£335.00
AD2C-060-14-0636	600	636	68	14	616	2102	£426.00
AD2C-060-18-0812	600	812	68	18	792	2702	£519.00
AD2C-060-28-1252	600	1252	68	28	1232	4204	£772.00
AD2C-060-22-0988	600	988	68	22	968	3303	£631.00
AD2C-180-06-0284	1800	284	68	6	774	2641	£390.00
AD2C-180-08-0372	1800	372	68	8	1032	3521	£481.00
AD2C-180-10-0460	1800	460	68	10	1290	4401	£573.00
AD2C-180-12-0548	1800	548	68	12	1548	5282	£660.00

### 3 Column Radiators

	Height	Width	Depth	No. of Sections	Watts	Btu/hr	
AD3C-050-22-0988	500	988	100	22	1131	3859	£712.00
AD3C-050-28-1252	500	1252	100	28	1440	4913	£877.00
AD3C-060-14-0636	600	636	100	14	852	2907	£523.00
AD3C-060-20-0900	600	900	100	20	1218	4156	£697.00
AD3C-060-24-1076	600	1076	100	24	1462	4988	£815.00
AD3C-060-30-1340	600	1340	100	30	1827	6234	£996.00
AD3C-075-10-0460	750	460	100	10	750	2559	£462.00
AD3C-075-14-0636	750	636	100	14	1050	3583	£597.00
AD3C-180-08-0372	1800	372	100	8	1412	4818	£585.00
AD3C-180-10-0460	1800	460	100	10	1764	6019	£695.00
AD3C-180-12-0548	1800	548	100	12	2117	7223	£804.00

### 4 Column Radiators

	Height	Width	Depth	No. of Sections	Watts	Btu/hr	
AD4C-030-30-1340	300	1340	140	30	1275	4350	£1934.00
AD4C-060-20-0900	600	900	140	20	1638	5589	£950.00



White  
600 x 460mm  
AD2C-060-10-0460

White  
600 x 812mm  
AD2C-060-18-0812

White  
600 x 1252mm  
AD2C-060-28-1252

White  
750 x 460mm  
AD3C-075-10-0460

White  
750 x 636mm  
AD3C-075-14-0636

White  
1800 x 372mm  
AD3C-180-08-0372

White  
1800 x 548mm  
AD3C-180-12-0548

# Medley

Guarantees

**15** Years  
on Medley + Skean



White  
1800 x 507mm  
ME1851W



11 Section Radiator – Anthracite



Towel Bar – Chrome

### Medley Towel Bar

Finish – Chrome

<b>ME034 200CP</b>	200mm	£71.00
<b>ME034 340CP</b>	340mm	£76.00
<b>ME034 480CP</b>	480mm	£82.00

## Medley

Finish – Anthracite or White

Material – Mild Steel

All heat outputs are shown at 50°C ΔT in compliance with BSEN442.

**MS** **H**

#### Vertical – Anthracite Finish

	Height	Width	Depth	Sections	End to End Connections	Watts	Btu/hr	
<b>ME1823A</b>	1800	229	90	3	229	922	3146	£388.00
<b>ME1837A</b>	1800	370	90	5	370	1538	5248	£574.00
<b>ME1851A</b>	1800	507	90	7	507	2153	7346	£760.00

#### Vertical – White Finish

	Height	Width	Depth	Sections	End to End Connections	Watts	Btu/hr	
<b>ME1823W</b>	1800	229	90	3	229	922	3147	£388.00
<b>ME1837W</b>	1800	370	90	5	370	1538	5248	£574.00
<b>ME1851W</b>	1800	507	90	7	507	2153	7346	£760.00

#### Horizontal – Anthracite Finish

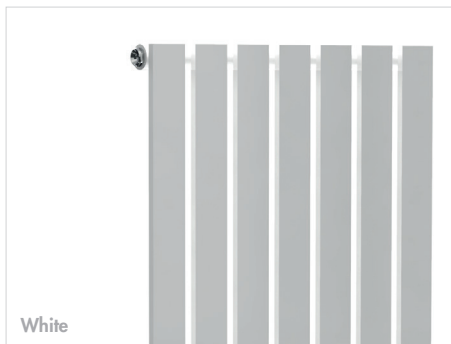
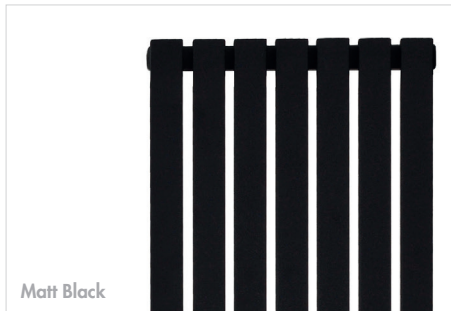
	Height	Width	Depth	Sections	End to End Connections	Watts	Btu/hr	
<b>ME4505A</b>	450	507	90	7	507	398	1358	£313.00
<b>ME4507A</b>	450	785	90	11	785	625	2133	£479.00
<b>ME4509A</b>	450	993	90	14	993	796	2716	£609.00
<b>ME4512A</b>	450	1202	90	17	1202	966	3296	£738.00
<b>ME5505A</b>	550	507	90	7	507	505	1723	£353.00
<b>ME5507A</b>	550	785	90	11	785	793	2706	£542.00
<b>ME5509A</b>	550	993	90	14	993	1009	3443	£688.00
<b>ME5512A</b>	550	1202	90	17	1202	1226	4183	£835.00

#### Horizontal – White Finish

	Height	Width	Depth	Sections	End to End Connections	Watts	Btu/hr	
<b>ME4505W</b>	450	507	90	7	507	398	1358	£313.00
<b>ME4507W</b>	450	785	90	11	785	625	2133	£479.00
<b>ME4509W</b>	450	993	90	14	993	796	2716	£609.00
<b>ME4512W</b>	450	1202	90	17	1202	966	3296	£738.00
<b>ME5505W</b>	550	507	90	7	507	505	1723	£353.00
<b>ME5507W</b>	550	785	90	11	785	793	2706	£542.00
<b>ME5509W</b>	550	993	90	14	993	1009	3443	£688.00
<b>ME5512W</b>	550	1202	90	17	1202	1226	4183	£835.00

# Symphony

Please see pages 392-393 for our range of valves



## Symphony

Finish – Chrome, Matt Black or White

Material – Mild Steel

All heat outputs are shown at 50°C ΔT in compliance with BSEN442.

**MS** **H**

Chrome Finish								
	Height	Width	Depth	Bars	End to End Connections	Watts	Btu/hr	
<b>SY1225C</b>	1200	252	70	5	252	242	826	£373.00
<b>SY1235C</b>	1200	358	70	7	358	339	1157	£432.00
<b>SY1825C</b>	1800	252	70	5	252	252	1198	£440.00
<b>SY1835C</b>	1800	358	70	7	358	358	1675	£669.00

Matt Black Finish								
	Height	Width	Depth	Bars	End to End Connections	Watts	Btu/hr	
<b>SY1225B</b>	1200	252	70	5	252	252	1252	£288.00
<b>SY1235B</b>	1200	358	70	7	358	358	1757	£322.00
<b>SY1825B</b>	1800	252	70	5	252	252	1819	£347.00
<b>SY1835B</b>	1800	358	70	7	358	358	2545	£415.00

White Finish								
	Height	Width	Depth	Bars	End to End Connections	Watts	Btu/hr	
<b>SY1225W</b>	1200	252	70	5	252	367	1252	£288.00
<b>SY1235W</b>	1200	358	70	7	358	515	1757	£322.00
<b>SY1825W</b>	1800	252	70	5	252	533	1819	£347.00
<b>SY1835W</b>	1800	358	70	7	358	746	2545	£415.00

## Symphony Towel Bar

Finish – Chrome

<b>SY039A 266CP</b>	266mm	£72.00
<b>SY039B 375CP</b>	375mm	£81.00





# Alumina

Guarantees

**10** Years on Alumina

## Vertical Single + Double Radiators



Anthracite  
1800 x 375mm  
ALV-180375AT



White  
1800 x 466mm  
ALVDP-180466WH

### Single Vertical Panel

Finish – White or Anthracite Material – Aluminium  
All heat outputs are shown at 50°C ΔT in compliance with BSEN442.

**AL H**

#### White Finish

	Height	Width	Depth	End to End Connections	Watts	Btu/hr	
ALV-180280WH	1800	280	76.5	280	843	2876	£405.00
ALV-180375WH	1800	375	76.5	375	1124	3835	£499.00
ALV-180470WH	1800	470	76.5	470	1405	4794	£587.00

#### Anthracite Finish

	Height	Width	Depth	End to End Connections	Watts	Btu/hr	
ALV-180280AT	1800	280	76.5	280	843	2876	£421.00
ALV-180375AT	1800	375	76.5	375	1124	3835	£515.00
ALV-180470AT	1800	470	76.5	470	1405	4794	£610.00

### Double Vertical Panel

Finish – White or Anthracite Material – Aluminium  
All heat outputs are shown at 50°C ΔT in compliance with BSEN442.

**AL H**

#### White Finish

	Height	Width	Depth	End to End Connections	Watts	Btu/hr	
ALVDP-180278WH	1800	278	117.5	278	1441	4917	£575.00
ALVDP-180372WH	1800	372	117.5	372	1916	6537	£710.00
ALVDP-180466WH	1800	466	117.5	466	2348	8011	£847.00

#### Anthracite Finish

	Height	Width	Depth	End to End Connections	Watts	Btu/hr	
ALVDP-180278AT	1800	278	117.5	278	1441	4917	£585.00
ALVDP-180372AT	1800	372	117.5	372	1916	6537	£728.00
ALVDP-180466AT	1800	466	117.5	466	2348	8011	£867.00

Please see pages 392-393 for our range of valves

# Alumina

## Horizontal Single + Double Radiators



White  
600 x 1135mm  
ALH-0601135WH

### Single Horizontal Panel

Finish – White or Anthracite  
Material – Aluminium

All heat outputs are shown at 50°C ΔT in compliance with BSEN442.

**AL H**

White Finish							
	Height	Width	Depth	End to End Connections	Watts	Btu/hr	
ALH-0600565WH	600	565	76.5	565	506	1726	£404.00
ALH-0600755WH	600	755	76.5	755	674	2300	£491.00
ALH-0600945WH	600	945	76.5	945	842	2873	£580.00
ALH-0601135WH	600	1135	76.5	1135	1011	3450	£668.00
ALH-0601325WH	600	1325	76.5	1325	1147	3914	£755.00
ALH-0601515WH	600	1515	76.5	1515	1342	4579	£844.00

Anthracite Finish							
	Height	Width	Depth	End to End Connections	Watts	Btu/hr	
ALH-0600565AT	600	565	76.5	565	506	1726	£414.00
ALH-0600755AT	600	755	76.5	755	674	2300	£503.00
ALH-0600945AT	600	945	76.5	945	842	2873	£597.00
ALH-0601135AT	600	1135	76.5	1135	1011	3450	£689.00
ALH-0601325AT	600	1325	76.5	1325	1147	3914	£780.00
ALH-0601515AT	600	1515	76.5	1515	1342	4579	£872.00

### Double Horizontal Panel

Finish – White or Anthracite  
Material – Aluminium

All heat outputs are shown at 50°C ΔT in compliance with BSEN442.

**AL H**

White Finish							
	Height	Width	Depth	End to End Connections	Watts	Btu/hr	
ALHDP-0600560WH	600	560	117.5	560	841	2869	£522.00
ALHDP-0600748WH	600	748	117.5	748	1121	3825	£642.00
ALHDP-0600936WH	600	936	117.5	936	1401	4780	£762.00
ALHDP-0601124WH	600	1124	117.5	1124	1654	5643	£908.00
ALHDP-0601312WH	600	1312	117.5	1312	1908	6510	£1032.00

Anthracite Finish							
	Height	Width	Depth	End to End Connections	Watts	Btu/hr	
ALHDP-0600560AT	600	560	117.5	560	841	2869	£531.00
ALHDP-0600748AT	600	748	117.5	748	1121	3825	£655.00
ALHDP-0600936AT	600	936	117.5	936	1401	4780	£779.00
ALHDP-0601124AT	600	1124	117.5	1124	1654	5643	£926.00
ALHDP-0601312AT	600	1312	117.5	1312	1908	6510	£1054.00

# Espada Aluminium

Guarantees

**10** Years  
on Espada Aluminium

Vertical Radiators



White  
1800 x 520mm  
ESAL-V1800514WH



Anthracite  
1800 x 520mm  
ESAL-V1800514AT

### Single Vertical Panel

Finish – White or Anthracite  
Material – Aluminium  
All heat outputs are shown at 50°C ΔT in compliance with BSEN442.

**AL** **H**

**White Finish**

	Height	Width	Depth	End to End Connections	Watts	Btu/hr	
ESAL-V1800218WH	1800	218	66	220	642	2190	£340.00
ESAL-V1800366WH	1800	366	66	370	1070	3651	£517.00
ESAL-V1800514WH	1800	514	66	520	1499	5113	£693.00
ESAL-V1800662WH	1800	662	66	670	1927	6574	£869.00

**Anthracite Finish**

	Height	Width	Depth	End to End Connections	Watts	Btu/hr	
ESAL-V1800218AT	1800	218	66	220	642	2190	£340.00
ESAL-V1800366AT	1800	366	66	370	1070	3651	£517.00
ESAL-V1800514AT	1800	514	66	520	1499	5113	£693.00
ESAL-V1800662AT	1800	662	66	670	1927	6574	£869.00

### Double Vertical Panel

Finish – White or Anthracite  
Material – Aluminium  
All heat outputs are shown at 50°C ΔT in compliance with BSEN442.

**AL** **H**

**White Finish**

	Height	Width	Depth	End to End Connections	Watts	Btu/hr	
ESAL-VDP1800218WH	1800	218	91.5	220	1109	3783	£469.00
ESAL-VDP1800366WH	1800	366	91.5	370	1849	6308	£728.00
ESAL-VDP1800514WH	1800	514	91.5	520	2589	8833	£987.00
ESAL-VDP1800662WH	1800	662	91.5	670	3329	11358	£1247.00

**Anthracite Finish**

	Height	Width	Depth	End to End Connections	Watts	Btu/hr	
ESAL-VDP1800218AT	1800	218	91.5	220	1109	3783	£469.00
ESAL-VDP1800366AT	1800	366	91.5	370	1849	6308	£728.00
ESAL-VDP1800514AT	1800	514	91.5	520	2589	8833	£987.00
ESAL-VDP1800662AT	1800	662	91.5	670	3329	11358	£1247.00

Please see pages 392-393 for our range of valves

# Espada Aluminium

## Horizontal Radiators



White  
595 x 900mm  
ESAL-HDP0588900WH



Anthracite  
595 x 900mm  
ESAL-HDP0588900AT

### Single Horizontal Panel

Finish – White or Anthracite  
Material – Aluminium  
All heat outputs are shown at 50°C ΔT in compliance with BSEN442.

AL H

White Finish							
	Height	Width	Depth	Pipe Centres	Watts	Btu/hr	
ESAL-H0440900WH	440	900	75	870	680	2319	£361.00
ESAL-H04401200WH	440	1200	75	1150	881	3006	£442.00
ESAL-H0588900WH	588	900	75	870	906	3092	£458.00
ESAL-H05881200WH	588	1200	75	1150	1175	4009	£566.00

Anthracite Finish							
	Height	Width	Depth	Pipe Centres	Watts	Btu/hr	
ESAL-H0440900AT	440	900	75	870	680	2319	£361.00
ESAL-H04401200AT	440	1200	75	1150	881	3006	£442.00
ESAL-H0588900AT	588	900	75	870	906	3092	£458.00
ESAL-H05881200AT	588	1200	75	1150	1175	4009	£566.00

### Double Horizontal Panel

Finish – White or Anthracite  
Material – Aluminium  
All heat outputs are shown at 50°C ΔT in compliance with BSEN442.

AL H

White Finish							
	Height	Width	Depth	Pipe Centres	Watts	Btu/hr	
ESAL-HDP0440900WH	440	900	122	870	1161	3960	£521.00
ESAL-HDP04401200WH	440	1200	122	1150	1513	5163	£633.00
ESAL-HDP0588900WH	588	900	122	870	1548	5281	£671.00
ESAL-HDP05881200WH	588	1200	122	1150	2018	6886	£819.00

Anthracite Finish							
	Height	Width	Depth	Pipe Centres	Watts	Btu/hr	
ESAL-HDP0440900AT	440	900	122	870	1161	3960	£521.00
ESAL-HDP04401200AT	440	1200	122	1150	1513	5163	£633.00
ESAL-HDP0588900AT	588	900	122	870	1548	5281	£671.00
ESAL-HDP05881200AT	588	1200	122	1150	2018	6886	£819.00

# Espada

Guarantees

**15** Years on Espada

Vertical Radiators



White  
1800 x 528mm  
ES-VDP180524WH



Double – White

### Single Panel

Finish – White or Anthracite

Material – Mild Steel

All heat outputs are shown at 50°C ΔT in compliance with BSEN442.

**MS H**

White Finish

	Height	Width	Depth	Watts	Btu/hr	
ES-V180228WH	1800	224	71	402	1372	£278.00
ES-V180376WH	1800	376	71	670	2286	£379.00
ES-V180524WH	1800	528	71	938	3200	£480.00
ES-V180672WH	1800	680	71	1206	4115	£580.00

Anthracite Finish

	Height	Width	Depth	Watts	Btu/hr	
ES-V180228AT	1800	224	71	402	1372	£281.00
ES-V180376AT	1800	376	71	670	2286	£383.00
ES-V180524AT	1800	528	71	938	3200	£484.00
ES-V180672AT	1800	680	71	1206	4115	£586.00

### Double Panel

Finish – White or Anthracite

Material – Mild Steel

All heat outputs are shown at 50°C ΔT in compliance with BSEN442.

**MS H**

White Finish

	Height	Width	Depth	Watts	Btu/hr	
ES-VDP180228WH	1800	224	71	627	2139	£439.00
ES-VDP180376WH	1800	376	71	1045	3566	£640.00
ES-VDP180524WH	1800	528	71	1463	4992	£841.00
ES-VDP180672WH	1800	680	71	1881	6418	£1042.00

Anthracite Finish

	Height	Width	Depth	Watts	Btu/hr	
ES-VDP180228AT	1800	224	71	627	2139	£466.00
ES-VDP180376AT	1800	376	71	1045	3566	£678.00
ES-VDP180524AT	1800	528	71	1463	4992	£891.00
ES-VDP180672AT	1800	680	71	1881	6418	£1103.00

# Espada

Please see pages 392-393 for our range of valves

## Horizontal Radiators



### Single Panel

Finish – White or Anthracite

Material – Mild Steel

All heat outputs are shown at 50°C ΔT in compliance with BSEN442.

MS H

#### White Finish

	Height	Width	Depth	Watts	Btu/hr	
ES-H0450090WH	452	900	63	420	1433	£314.00
ES-H0450120WH	452	1200	63	552	1883	£355.00
ES-H0598090WH	604	900	63	560	1911	£380.00
ES-H0598120WH	604	1200	63	736	2511	£434.00

#### Anthracite Finish

	Height	Width	Depth	Watts	Btu/hr	
ES-H0450090AT	452	900	63	420	1433	£317.00
ES-H0450120AT	452	1200	63	552	1883	£359.00
ES-H0598090AT	604	900	63	560	1911	£384.00
ES-H0598120AT	604	1200	63	736	2511	£438.00

### Double Panel

Finish – White or Anthracite

Material – Mild Steel

All heat outputs are shown at 50°C ΔT in compliance with BSEN442.

MS H

#### White Finish

	Height	Width	Depth	Watts	Btu/hr	
ES-HDP0450090WH	452	900	112	654	2231	£532.00
ES-HDP0450120WH	452	1200	112	858	2927	£607.00
ES-HDP0598090WH	604	900	112	872	2975	£668.00
ES-HDP0598120WH	604	1200	112	1144	3903	£766.00

#### Anthracite Finish

	Height	Width	Depth	Watts	Btu/hr	
ES-HDP0450090AT	452	900	112	654	2231	£536.00
ES-HDP0450120AT	452	1200	112	858	2927	£612.00
ES-HDP0598090AT	604	900	112	872	2975	£672.00
ES-HDP0598120AT	604	1200	112	1144	3903	£770.00

## Valves

Guarantees

**1** Year  
on Valves**Modern 15mm Angled Radiator Valves (Pair)**Finish – Polished Chrome  
Dimensions – 90.5(h) x 75(w) x 32(d) mm

INST-AL025LC

£40.00

**Modern 15mm Straight Radiator Valves (Pair)**Finish – Polished Chrome  
Dimensions – 75(h) x 87.5(w) x 32(d) mm

INST-AL024LC

£40.00

**Crosshead Angled Traditional Radiator Valve 1/2" x 15mm (Pair)**Finish – Polished Chrome  
Dimensions – 110(h) x 115(w) x 46(d) mm

INST-AL034LC

£66.00

**Square 15mm Decorative Angled Radiator Valves (Pair)**Finish – Polished Chrome  
Dimensions – 82(h) x 76(w) x 30(d) mm

INST-AL030LC

£75.00

**Square 15mm Decorative Straight Radiator Valves (Pair)**Finish – Polished Chrome  
Dimensions – 64(h) x 95(w) x 30(d) mm

INST-AL031LC

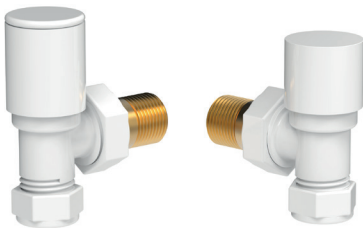
£75.00

**Art Deco Angled Radiator Valve 1/2" x 15mm (Pair)**Finish – Chrome  
Dimensions – 126(h) x 80(w) x 64(d) mm

INTRAD006

£90.00

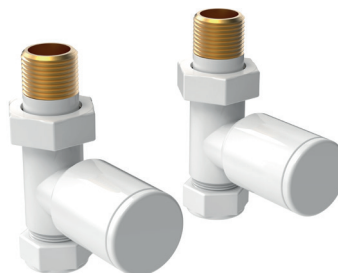
new

**Contemporary Radiator Valves Angled 1/2" x 15mm**Finish – Gloss White  
Dimensions – 78(h) x 75(w) x 30(d) mm

INCNT003AP-GW

£48.00

new

**Contemporary Radiator Valves Straight 1/2" x 15mm**Finish – Gloss White  
Dimensions – 83(h) x 75(w) x 30(d) mm

INCNT003ST-GW

£48.00

**Classic Thermostatic 15mm Radiator Valve + Air Vent (Twin Pack)**Finish – Polished Chrome  
Dimensions – 139(h) x 56(w) x 55(d) mm

INST-AL055LC

£128.00

# Valves

Please see pages 364-365 for alternative colour valves



### 15mm Angled TRV (Twin Pack)

Finish – Chrome  
Dimensions – 130(h) x 42(w) x 65(d) mm

15PACKACP.1 £28.00



### 15mm Straight TRV (Twin Pack)

Finish – Chrome  
Dimensions – 120(h) x 47(w) x 86(d) mm

15PACKSCP.1 £30.00



### 15mm Corner TRV + LS Pack

Finish – Chrome  
Dimensions – 117.75(h) x 39(w) x 15(d) mm

TRVCNR £49.00



### Modern Thermostatic Radiator Valves Angled 1/2" x 15mm

Finish – Black or Anthracite  
Dimensions – 136(h) x 68(w) x 40(d) mm

INCNT004AP-BL	Black	£51.00
INCNT004AP-AT	Anthracite	£51.00



### Modern Thermostatic Radiator Valves Straight 1/2" x 15mm

Finish – Black or Anthracite  
Dimensions – 84(h) x 118(w) x 40(d) mm

INCNT004ST-BL	Black	£55.00
INCNT004ST-AT	Anthracite	£55.00



### Modern Thermostatic Corner Radiator Valves 1/2" x 15mm

Finish – Black or Anthracite  
Dimensions – 84(h) x 118(w) x 40(d) mm

INCNT024-BL	Black	£67.00
INCNT024-AT	Anthracite	£67.00



new

### Modern Thermostatic Radiator Valves Angled 1/2" x 15mm

Finish – Brushed Brass  
Dimensions – 136(h) x 68(w) x 40(d) mm

INCNT004AP-ZBBS £77.00



### 15mm Pipe Cover Set (Pair)

Finish – Polished Chrome  
Dimensions – 130(h) x 51(w) x 51(d) mm

INST-AL033LC £26.00



### 15mm Corner Radiator Valves (Pair)

Finish – Polished Chrome  
Dimensions – 75(h) x 60(w) x 75(d) mm

INST-AL029LC £45.00